

PAPER CRAFT

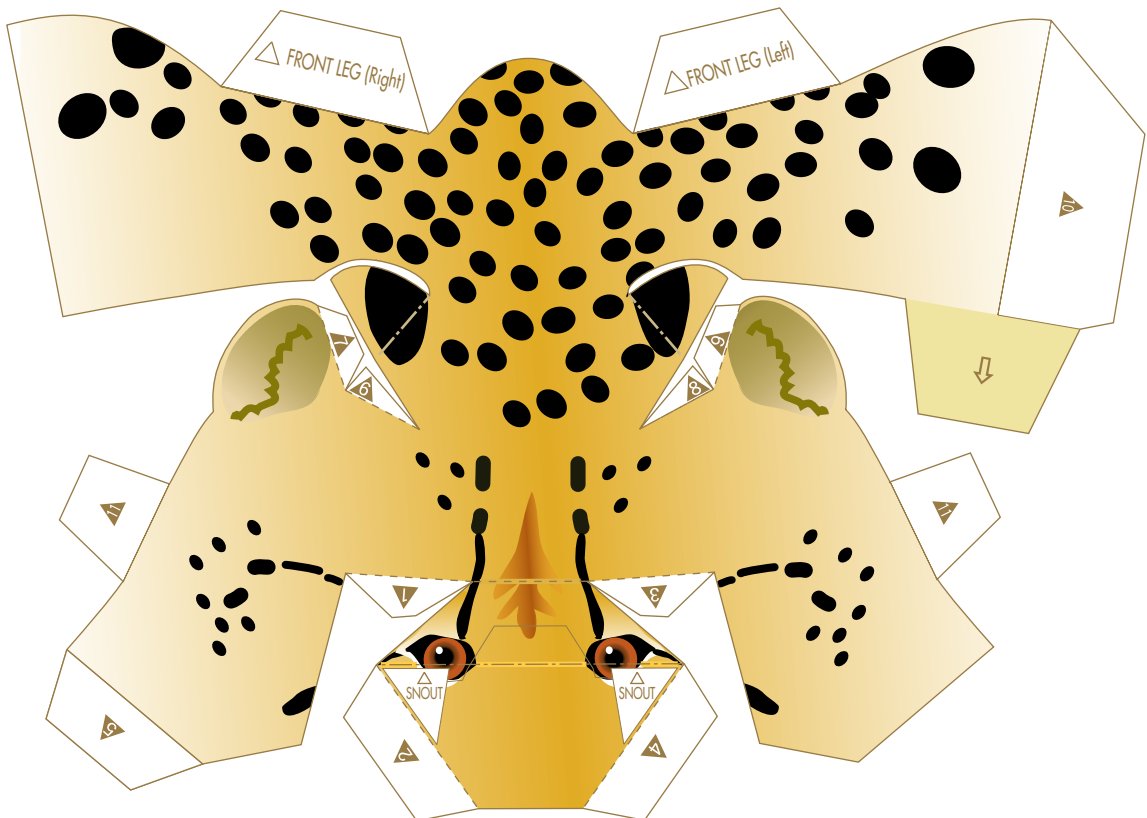
Cheetah

Classification: Mammal, Carnivore, Cat Family
Height: 120 to 150 cm
Weight: 30 to 65 kg
Habitat: Western Asia, central Asia, India, Africa
Population: 12,000 to 15,000

The cheetah is the fastest of all land animals, capable of running at speeds up to 120 kph. Cheetahs have slim bodies, long legs, long tails, and high shoulders. A cheetah cannot retract its claws, so they are always out to grip the earth like spikes on a runner's shoes. The cheetah's broad chest holds a large heart and lungs. All these different features of a cheetah's body work together to help it run. Clearly, cheetahs were born to run fast. However, cheetahs can only maintain their top speed for a distance of about 500 meters, and in fact often fail to catch their prey.



HEAD

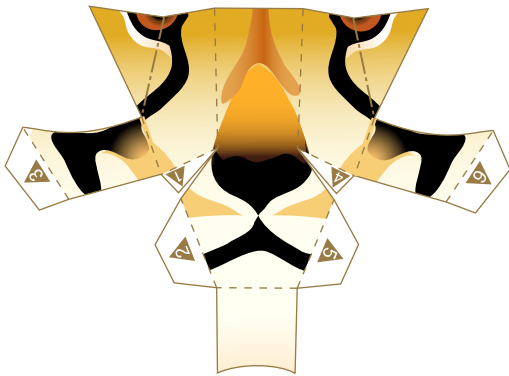


⇒ Do not glue areas marked with an arrow; instead, insert these parts into their mating parts, in the direction indicated by the arrow.

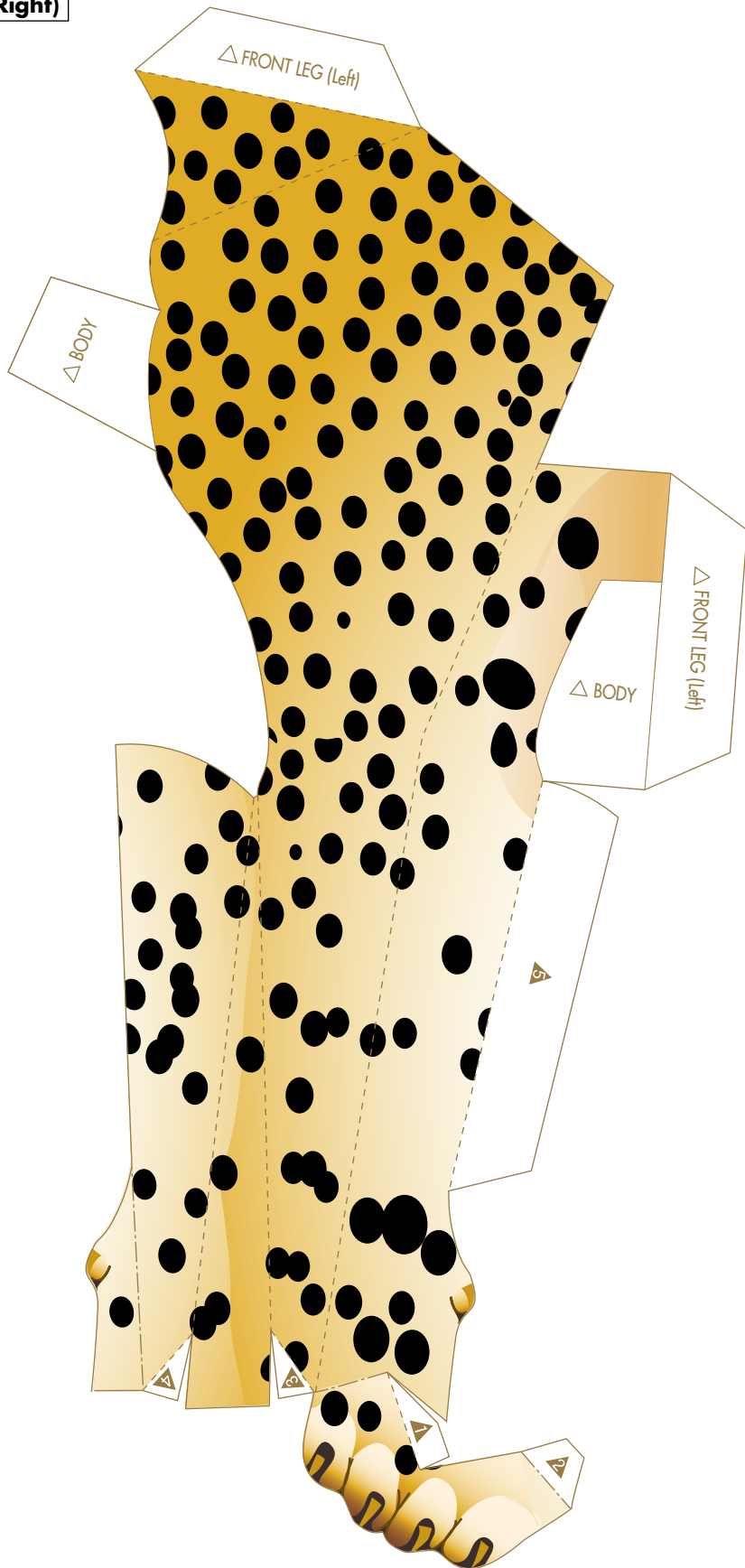
FRONT LEG (Left)

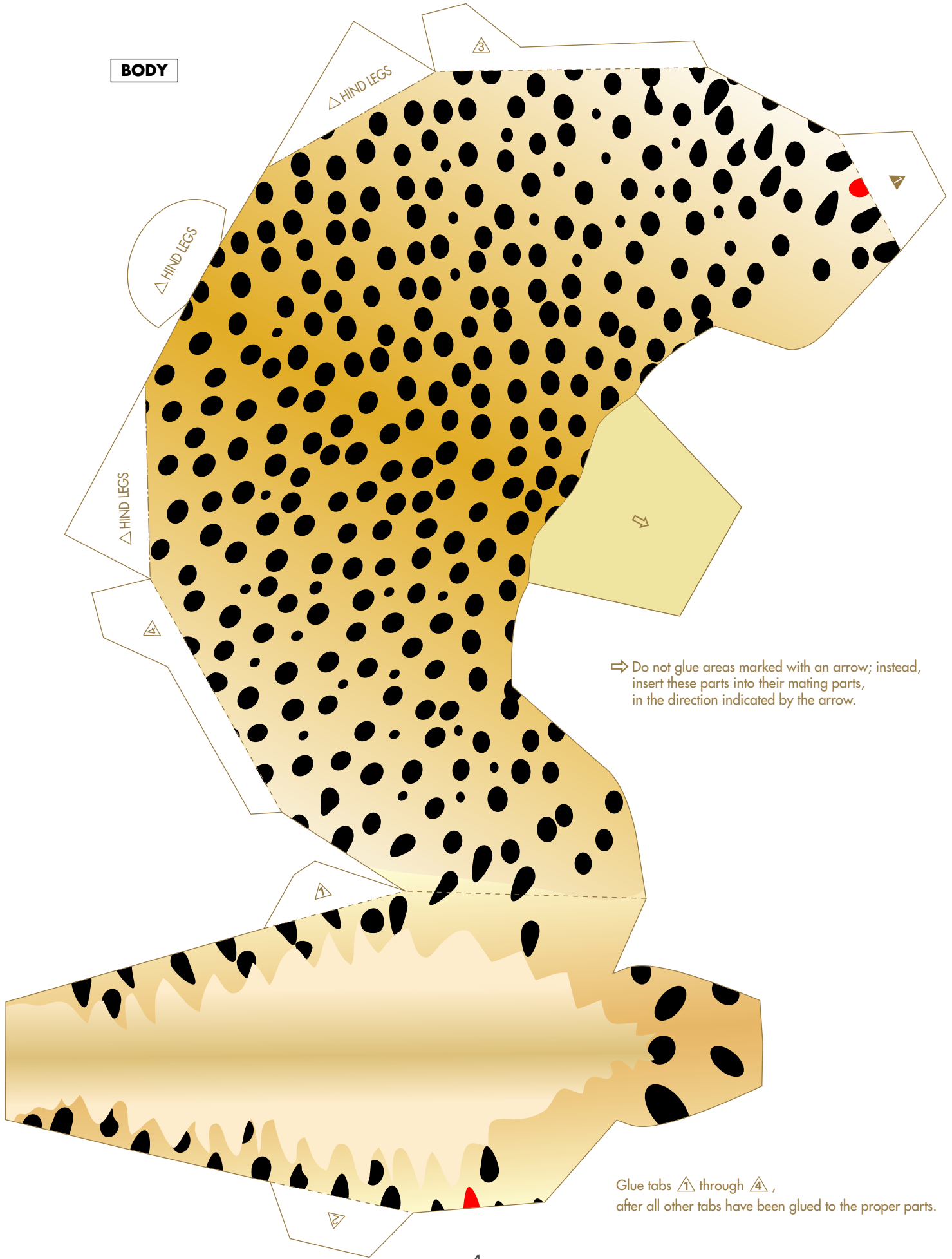


SNOUT



FRONT LEG (Right)





BODY

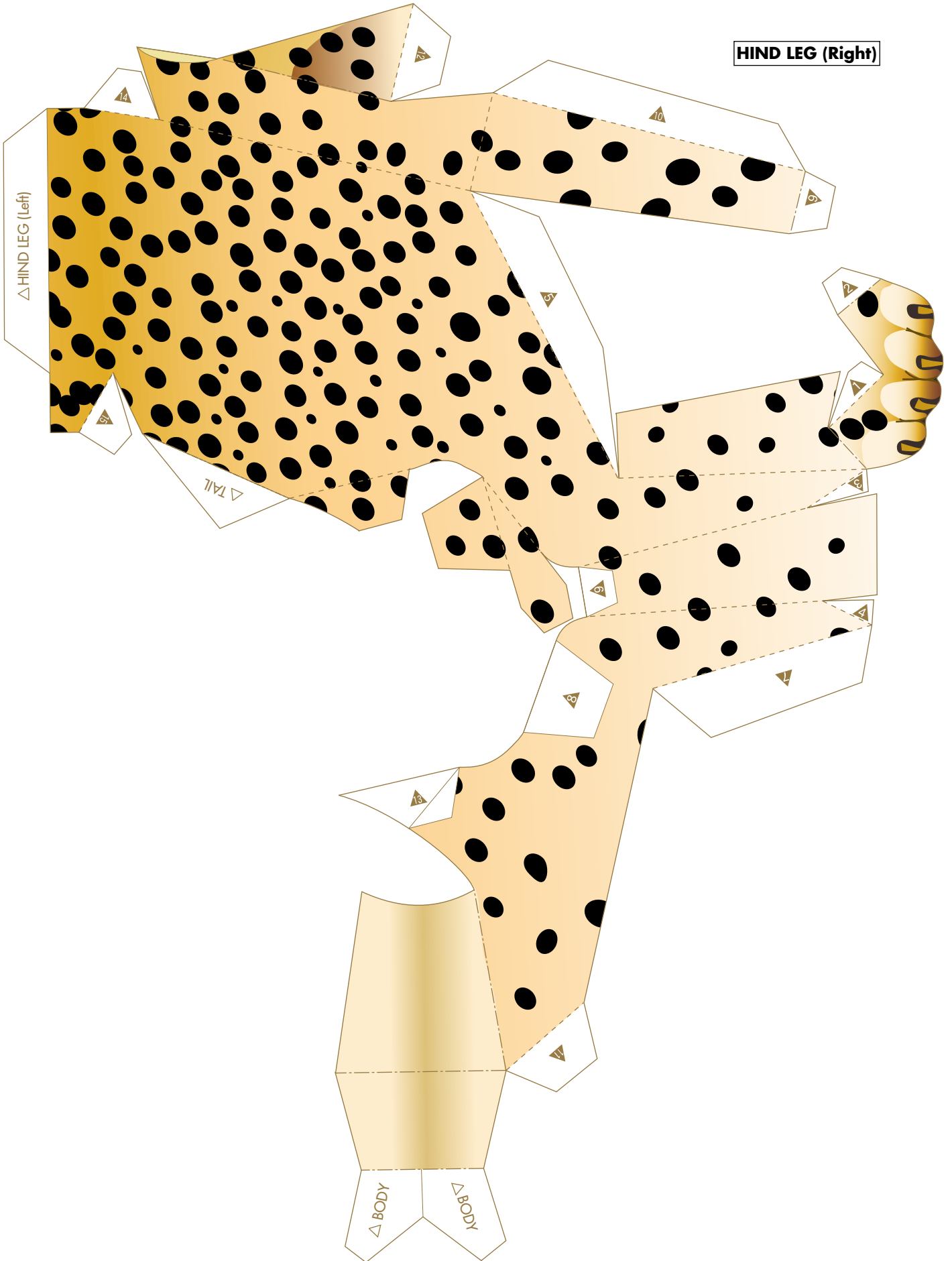
△ HIND LEGS

△ HIND LEGS

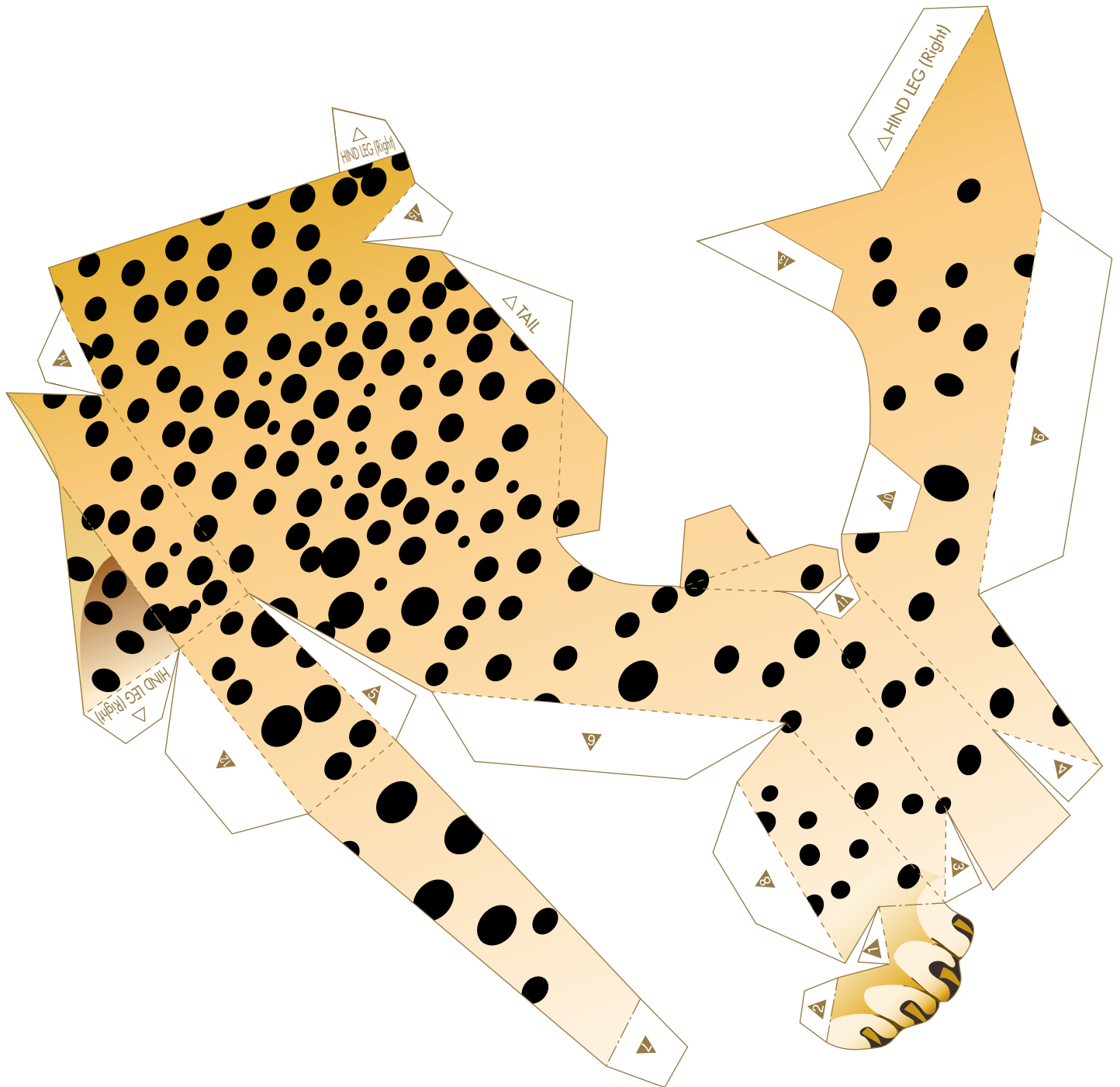
△ HIND LEGS

⇨ Do not glue areas marked with an arrow; instead, insert these parts into their mating parts, in the direction indicated by the arrow.

Glue tabs △1 through △4, after all other tabs have been glued to the proper parts.



HIND LEG (Left)



TAIL

